

---

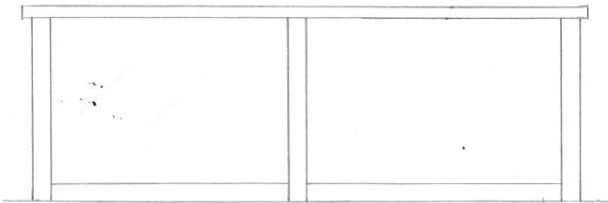
# WOODVILLE

## CONSTRUCTIONS

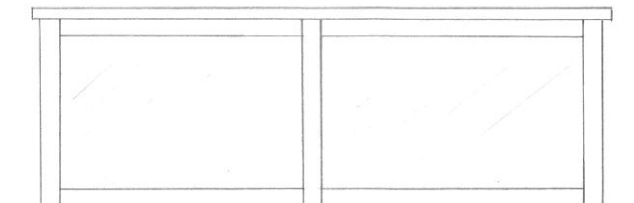
### 50 Series Glass Balustrading

Woodville Constructions "50 Series" Glass Balustrading utilizes a 50mm (either square or round) post system in a variety of materials and finishes, such as powdercoated extruded aluminium, brushed or polished stainless steel and hot dipped galvanised steel. All our balustrading meets and exceeds current building legislation. We use 8mm, 10mm or 12mm clear toughened glass (tinted also available) depending on design criteria. Complemented by a matching array of handrails a large range of options are available to obtain the desired look for your project.

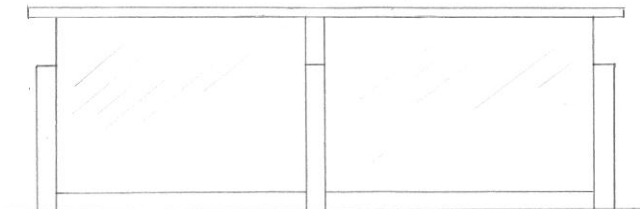
#### Some Design Options



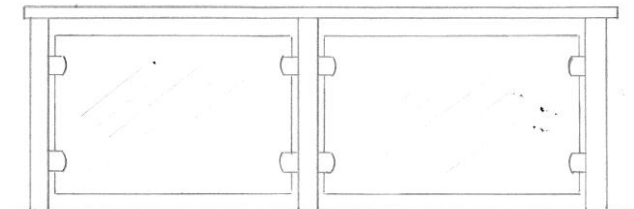
**1 - Three Edge Support**



**2 - Two Edge Support**



**3 -Two Edge Support  $\frac{3}{4}$  Post**



**4 - Glass Clamp Support**